



INDOOR AIR QUALITY

PRODUCT GUIDE

GPS[®]



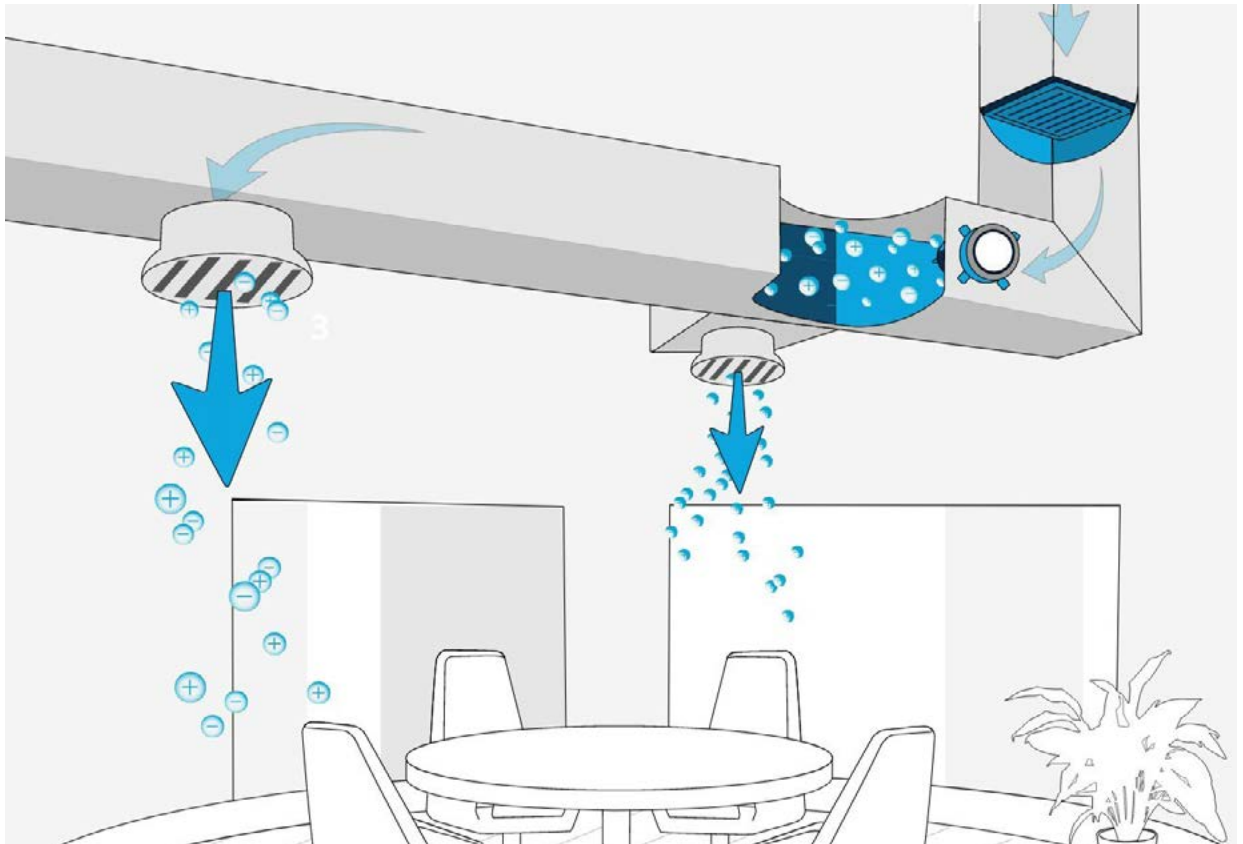
TABLE OF CONTENTS

Table Of Contents

Ion Distribution Fan..... 3

Ionization Systems4-11

Accessories 12-16





ION DISTRIBUTION FAN

IDF-2™ CEILING-MOUNTED ION DISTRIBUTION FAN

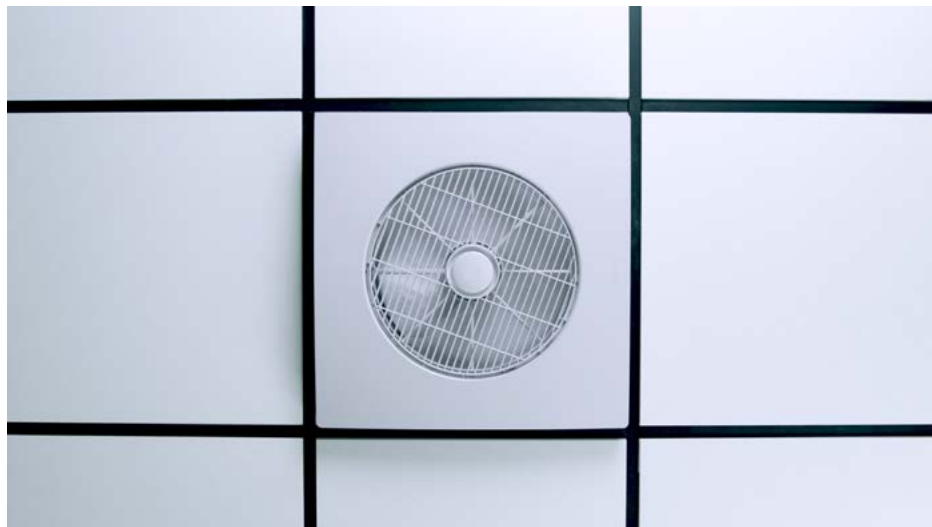
The IDF-2 is a low-profile, quiet operation ceiling tile fan with NPBI™ technology directly integrated. The unit is designed to be fitted into commercial drop/suspended ceilings using a standard 24" x 24" tile footprint and utilizes a high efficiency brushless fan motor. The revolving diffuser ensures an even introduction of ions for optimal in-space concentration levels. The IDF-2 is easy to install and ideally suited to spaces such as conference rooms, classrooms and open plan offices.

BENEFITS

- NPBI™
- 120–240 VAC Voltage Input
- Auto-Cleaning Ionizer
- Carbon Fiber Brush Emitters
- DC Brushless Fan Motor
- 3 Fan Speeds
- 360 Degree Rotating Diffuser
- User Remote Control
- Plenum Suitable
- UL 867 Compliant
- UL 2998 Compliant
- CARB Compliant
- FCC Part 18 Compliant
- Optional Hard Surface Ceiling Mount
- Optional 277V transformer



[BUY NOW](#)





IONIZATION SYSTEM

DM-2™

The DM-2™ is the auto-cleaning needlepoint bipolar air ionization system designed for indoor duct mounting.

BENEFITS:

Multi-Voltage Input 24 VDC, 24–240 VAC

- Auto-Cleaning
- Operation Status Display
- Integral Building Automation System (BAS) Alarm Contacts
- Quick-Turn Duct Adapter
- 1/2" Hole for 3/8" Conduit Connector
- Carbon Fiber Brush Emitters
- UL 2998 Compliant
- UL 2043 Compliant
- CARB Compliant
- FCC Compliant (Part 18)

SPECIFICATIONS:

Input Voltage (Standard)	24 VAC/VDC, 110–240 VAC
Input Voltage (Optional)	277 VAC – using PS-2 power supply
Power Consumption	11 watts (operating), 14 watts (cleaning cycle)
Frequency	50/60 Hz
Total Ion Output	200M ions/cc
Airflow Capacity	2,400 CFM or up to 6 tons
Temperature Range	–20° F to 140° F
Humidity Range	0–100% RH
Unit Dimensions	3.75" Dia. × 1.75" L (in-duct) / 5.75" Dia. × 3.75" L (overall)
Unit Weight	1.8 lbs
Electrical Listings	UL, cUL
Alarm Contact Rating	250 VAC / 1A, N.O. "dry" contact
Compliance & Certifications	UL 2998, UL 867, CARB
Humidity Range	0–100% RH
Unit Dimensions	7.4"L × 1.6"T × 2.4"W
Weight	0.45 lbs
Electrical Approvals	UL, cUL
Alarm Contact Rating	250 VAC / 1A, N.O. "dry" contact (pass-through)
Compliance and Certifications	UL 1310 (Class 2 Power Unit)



[BUY NOW](#)



IONIZATION SYSTEM

CI-2®

The CI-2® is an auto-cleaning, no-maintenance, needlepoint bipolar ionization system designed to fit where traditional air ionizers don't, including fan coils, heat pump PTACs, ductless mini splits, ceiling cassettes, ducted modules, and traditional split systems and air handlers up to 2,400 CFM.

Made in the USA with U.S. and global parts.

BENEFITS:

- 24 VDC Output
- Integral Building Automation System (BAS) Alarm Contacts
- 7/8" Hole Sized for 1/2" Trade Size Conduit Fittings on Power I
- 5/8" Hole Sized for 3/8" Trade Size Conduit Fittings on Power I
- UL 2043 Compliant

SPECIFICATIONS:

Ionizers Supported	CI-2, DM-2
Input Voltage	110-277 VAC
Output Voltage	24 VDC
Frequency	50/60 Hz
Temperature Range	-20° F to 140° F
Humidity Range	0-100% RH
Unit Dimensions	7.4"L x 1.6"T x 2.4"W
Weight	0.45 lbs
Electrical Approvals	UL, cUL
Alarm Contact Rating	250 VAC / 1A, N.O. "dry" contact (pass-through)
Compliance and Certifications	UL 1310 (Class 2 Power Unit)



BUY NOW





IONIZATION SYSTEM

GPS-DM48-AC™ AUTO-CLEANING NEEDLEPOINT BIPOLAR IONIZATION AIR PURIFICATION DEVICE

The GPS-DM48™-AC is a lightweight, duct-mounted needlepoint bipolar ionization (NPBI™) system. The maintenance-free unit is designed for indoor or outdoor duct mounting and can handle up to 4,800 CFM or 12 tons.

BENEFITS:

- Universal Voltage Input 24–240 VAC
- > 400 Million +/- Ions/cc
- Programmable Auto-Cleaning Cycle
- Carbon Fiber Brush Emitters
- Integral Building Automation System (BAS) Alarm Contacts
- ¾ Quick-Turn Duct Adapter
- 6-Foot Watertight Flexible Conduit

SPECIFICATIONS:

Input Voltage	24–240 VAC
Power Consumption	12 watts
Frequency	50/60 Hz
Total Ion Output	>400M ions/cc
Airflow Capacity	0–4,800 CFM or up to 12 tons
Temperature Range	–20°F to 140°F
Humidity Range	0–100% RH
Unit Dimensions	3.75" Dia. × 7"L
Unit Weight	2.31 lbs
Electrical Listings	UL, cUL
Alarm Contact Rating	250VAC/1A, N.O. "dry" contact
Compliance & Certifications	UL 867, OSHPD Seismic (OSP), IAQP, CE



[BUY NOW](#)



IONIZATION SYSTEM

GPS-FC24-AC™ AUTO-CLEANING IONIZATION SYSTEM

Auto-cleaning, lightweight needlepoint bipolar ionization (NPBI™) system that handles up to 2,400 CFM of 6 tons. Designed for multiple mounting options including fan inlet, interior duct walls or floors.

BENEFITS:

- > 300 Million +/- Ions/cc
- Universal Voltage Input 24–240 VAC
- Programmable Auto-Cleaning Cycle
- Carbon Fiber Brush Emitters
- Integral Building Automation System (BAS) Alarm Contacts

SPECIFICATIONS:

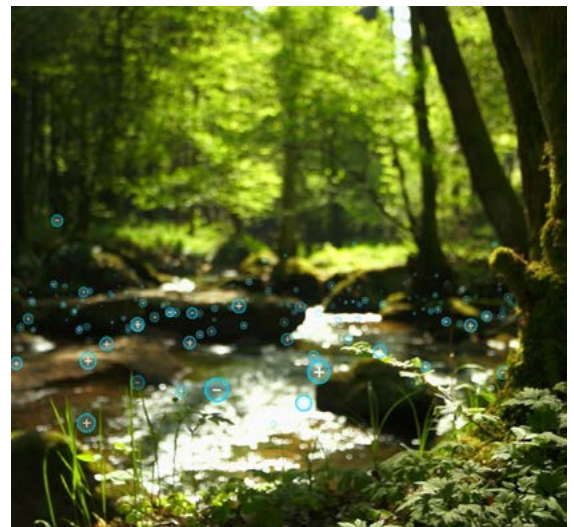
Input Voltage:	24–240 VAC
Amps:	0.170–0.017 A operating/0.33–0.03 A cleaning cycle
Power:	4 watts operating/8 watts cleaning cycle
Frequency:	50/60 Hz
Total Ion Output:	> 300M ions/cc
Airflow Capacity:	0–2,400 CFM or up to 6 tons
Temperature Range:	–20°F to 200°F
Humidity Range:	0–100% RH
Ionizer Unit Dimensions:	7.9"L × 1.1"W × 5.0"H
Ionizer Unit Weight:	1.25 lbs
Electrical Listings:	UL, cUL
Alarm Contact Rating:	250VAC/1A, N.O. "dry" contact
Compliance & Certifications:	UL 867, OSHPD Seismic (OSP), IAQP, CE



[BUY NOW](#)

CLEANER AIR, NATURALLY

Naturally occurring ions are everywhere in the outdoors, and they are constantly working to clean the air. Ions are created with energy from rushing water, crashing waves and even sunlight. GPS NPBI technology generates ions without producing ozone or other harmful byproducts, so you can bring outdoor freshness indoors.





IONIZATION SYSTEM

GPS-FC48-AC™ COMPACT AUTO-CLEANING IONIZATION SYSTEM

Auto-cleaning, lightweight NPBI® systems that handles up to 4,800 CFM or 12 tons. Designed for multiple mounting options including fan inlet, interior duct walls or floors.

BENEFITS:

- Multi-Voltage Input 24 VDC, 24–240 VAC
- > 400 Million +/- Ions/cc
- Programmable Auto-Cleaning Cycle
- Carbon Fiber Brush Emitters
- Integral Building Automation System (BAS) • Alarm Contacts
- UL 2998 Compliant
- CARB Compliant
- UL 2043 Compliant
- FCC Compliant (Part 18)



[BUY NOW](#)

SPECIFICATIONS:

Input Voltage:	24–240 VAC
Amps:	0.41–0.041 A
Power Consumption:	10 watts
Frequency:	50/60 Hz
Total Ion Output:	> 400M ions/cc
Airflow Capacity:	0–4,800 CFM or up to 12 tons
Temperature Range:	–20°F to 200°F
Humidity Range:	0–100% RH
Unit Dimensions:	11.10"L × 1.84"W × 3.52"H
Unit Weight:	1.32 lbs
Electrical Listings:	UL, cUL
Alarm Contact Rating:	250VAC/1A, N.O. "dry" contact
Compliance & Certifications:	UL 867, OSHPD Seismic (OSP), IAQP, CE



TARGETS PARTICLES

When ions disperse throughout a room, they combine with particles suspended in the air. This creates a snowball effect, in which particles of opposite polarity cluster together. The larger a particle becomes, the easier it is to capture in filtration systems.



REDUCES PATHOGENS

During the NPBI™ process, contact with ions disrupts pathogens' surface proteins, rendering them inactive and unable to replicate.



TACKLES ODORS

GPS' NPBI™ technology breaks down chemical, pet, cooking and other odors into basic harmless compounds, leaving indoor air fresh smelling and free of odor-causing VOCs.



SAVES ENERGY

By keeping indoor air cleaner, NPBI reduces the amount of air required from outside to keep things fresh—saving you initial ventilation equipment costs and up to 30% on energy consumption.



IONIZATION SYSTEM

GPS-IMOD® MODULAR IONIZATION AIR PURIFICATION DEVICE

The patented GPS-iMOD is a modular needlepoint bipolar ionization (NPBI®) system that is field assembled to provide coverage across coil widths in 6-inch increments.



BENEFITS:

- > 840 Million Ions/cc per 6 inches of bar
- Universal Voltage Selector Switch
- Six High-Voltage Output Ports
- Integral Building Automation System (BAS) Alarm Contacts
- Illuminated On/Off Switch
- Plasma on Indication Light
- UL 2998 Ozone-Free

SPECIFICATIONS:

Input Voltage:	24/120/208–240 VAC
Amps:	0.500 A/0.120 A/0.065 A
Frequency:	50/60 Hz
Output Voltage:	5 kV RMS
Output Frequency:	50/60 Hz
Total Ion Output:	>140M ions/cc per inch of bar
Temperature Range:	–40°F to 200°F
Humidity Range:	0–100% RH
Power Entry:	UL Listed, Plenum-Rated Line Cord with 3-Prong Plug
Electrical Listings:	UL, cUL
Compliance & Certifications:	UL 2998, UL 867, IAQP, OSHPD Seismic (OSP), CE
Power Unit Dimensions:	9.00"L × 3.25"W × 4.75"H
Ionizer Bar Dimensions:	1.6"H × 0.75"W, Length = 6.0" per 6" section + 1.2" (240" Max)
Power Unit Weight:	4.63 lbs
Ionizer Bar Weight:	0.24 lbs per 6" section

GPS-IMOD-30-SNAP

[BUY NOW](#)



30"

GPS-IMOD-72-SNAP

[BUY NOW](#)



72"

GPS-IMOD-78-SNAP

[BUY NOW](#)



78"

GPS[®]

IONIZATION SYSTEM

GPS-IRIB[®]-18 & GPS-IRIB[®]-36

The GPS-iRIB[®] 18-inch and 36-inch are made from a flexible heat and cold resistant, inert polyimide material containing a circuit with special carbon fiber ionization needles soldered into the circuit traces.

BENEFITS:

- > 35 Million +/- Ions/cc per Foot
- Fold-to-Length Circuit
- Local LED Power Indication
- Integral Building Automation System (BAS) Alarm Contacts
- Velcro[®] for Easy Installation

SPECIFICATIONS:

Input Voltage:	110–240VAC
Power Consumption:	5 watts
Frequency:	50/60 Hz
Output Voltage:	2 kV
Total Ion Output:	>35M ions/cc per foot
Airflow Capacity:	0–3,200 CFM or 8 tons
Alarm Contact Rating:	250VAC/1A, N.O. “dry” contact
Compliance & Certifications:	UL 867, UL 2998, IAQP, OSHPD Seismic (OSP), CE
Temperature Range:	–40°F to 140°F
Humidity Range:	0–100% RH
Power Unit Dimensions:	1.00"H × 1.75"W × 3.75"L
Ionizer Strip Dimensions:	1.50"W × 18.00"L × 0.05"H
Combined Weight:	0.50 lbs. for 18"/0.54 lbs. for 36"
Electrical Listings:	UL, cUL



GPS-IRIB[®]-18

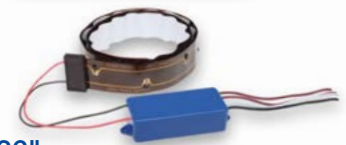
[BUY NOW](#)



18"

GPS-IRIB[®]-36

[BUY NOW](#)



36"

INDEPENDENT LABORATORY TESTING RESULTS SUMMARY

Pathogen	SARS-CoV-2	Norovirus*	Human Coronavirus 229E	Legionella	Clostridium Difficile	Tuberculosis	MRSA	Staphylococcus	E. Coli
Time In Chamber	30 min	30 min	60 min	30 min	30 min	60 min	30 min	30 min	15 min
Rate Of Reduction	99.4%	93.5%	90.0%	99.7%	86.8%	69.0%	96.2%	96.2%	99.6%
Testing Lab	INNOVATIVE BIOANALYSIS	ATS	ALG	EMSL	EMSL	EMSL	EMSL	EMSL	EMSL



IONIZATION SYSTEM GPS-FC-3-BAS™ NPBI AIR PURIFICATION DEVICE

The GPS-FC-3-BAS™ unit is designed to be mounted inside of fan coils, heat pumps, PTACs, ductless mini-splits and air handlers up to 3,200 CFM or 8 tons. It's compact size and simple mounting requirement allows it to be mounted almost anywhere in just a few minutes.



[BUY NOW](#)

BENEFITS:

- Carbon Fiber Brush Emitters
- > 350 Million + and – Ions/cc
- LED Operation Status
- Integral Building Automation System (BAS) Alarm Contacts
- Powered by 24 Volts AC

SPECIFICATIONS:

Input Voltage:	24VAC
Power Consumption:	12 Watts
Frequency:	50/60HZ
Total Ion Output:	>350M ions/cc
Airflow Capacity:	0–3,200 CFM or 8 tons
Temperature Range:	–20° to 160°F
Humidity Range:	0–100% RH
Unit Dimensions:	2.6"L x 1.9"H x 1.3"D
Unit Weight:	0.23 lbs
Electrical Listings:	UL
Alarm Contact Rating:	24VAC, 0.1A, N.O. “dry” contacts
Compliance & Certifications:	UL 867, UL 2998, OSHPD Seismic (OSP), IAQP, CE

CERTIFICATIONS

*GPS' NPBI technology has been certified by
UL 867 and UL 2998 as ozone-free*



UL 867 Ozone Standard
Certified



UL 2998 Ozone-Free
Validation



POWER SUPPLY

PS-2™

The PS-2 is a dedicated power supply transformer for GPS' recently launched compact CI-2 and duct-mounted DM-2 that optimize the delivery of ionization technology to a wide variety of indoor spaces. Designed to support input voltages from 110 to 277 VAC, the PS-2 also facilitates the pass-through of Building Automation System (BAS) alarm contacts. Its output voltage is 24 VDC.

The easy-to-install unit's small size (7.4" X 1.6" X 2.4") and light weight (0.45 lbs) is designed to fit near the compact CI-2 and DM-2 in plenum and non-plenum spaces where traditional air ionizers cannot. The PS-2 is a Class 2 power source certified to UL1310, UL 62368 and UL 2043.



[BUY NOW](#)

BENEFITS:

- 24 VDC Output
- Integral Building Automation System (BAS) Alarm Contacts
- 7/8" Hole Sized for 1/2" Trade Size Conduit Fittings on Power Entry Side
- 5/8" Hole Sized for 3/8" Trade Size Conduit Fittings on Power Exit Side
- UL 2043 Compliant

SPECIFICATIONS:

Ionizers Supported	CI-2, DM-2
Input Voltage	110-277 VAC
Output Voltage	24 VDC
Frequency	50/60 Hz
Temperature Range	-20° F to 140° F
Humidity Range	0-100% RH
Unit Dimensions	7.4"L x 1.6"T x 2.4"W
Weight	0.45 lbs
Electrical Approvals	UL, cUL
Alarm Contact Rating	250 VAC / 1A, N.O. "dry" contact (pass-through)
Compliance and Certifications	UL 1310 (Class 2 Power Unit)



DUCT-MOUNTED SADDLE

DM-S™

The DM-S™ is a single adaptable saddle solution for installing the GPS® DM-2™ onto varying round duct diameters of 6" and up.

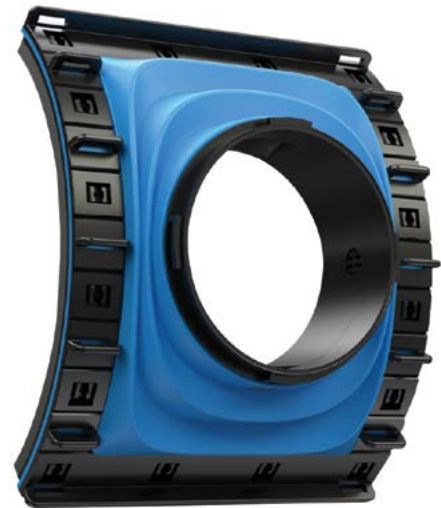
The DM-S saddle installation accessory is sold separately from NPBI™ systems.

BENEFITS:

- Quick-Turn Adapter Connection for Ionizer
- Adaptable Skeleton Can Be Set to Multiple Round Surface Duct Profiles
- Multipoint Fastener Collar With Foam Gasket for Sealing Against Duct
- Flexible Membrane Seals Saddle Body
- UL 2043 Complaint

SPECIFICATIONS:

Ionizers Supported	DM-2
Unit Dimensions	8.5"W × 6.5"H × 2.0"L
Duct Types Supported	Solid 6" Dia. round and up
Weight	0.5 lbs



[BUY NOW](#)

GPS®

DUCT-MOUNTED ION METER

GPS-iMEASURE-D

The GPS-iMEASURE-D ion detector is permanently mounted in the duct downstream of any GPS ionization device. It measures ion levels in real time and reports back to a BAS. It includes three sensitivity levels, 20,000/200,000/2,000,000 ions/cc, that can be set based on the application and in-duct location.

BENEFITS:

- Monitor In-Duct Ionization Levels
- 20,000 to 2 Million Ions/cc
- Input Voltage 12 to 24 VAC or VDC

SPECIFICATIONS:

Input Voltage	20–40 VDC or VAC
Current	20mA
Power Consumption	2.4 watts
Output Impedance	1 Kohm
Unit Dimensions	Housing: 3.25"L x 6.20"W x 1.60"H, Sensing Rod: 10.5"L x 2.0"Dia.
Output Voltage	0–10 VDC; scaled to selected ion sensing range
Ion Sensing Range	0–20K, 0–200K, 0–2M ions/cc (+ or -)
Polarity	Field-selectable positive or negative
Humidity Range	0–95% RH non-condensing
Temperature Range	0° F to 148° F
Duct Airflow	
1,000–100,000 CFM	
Duct Velocity	
300–1,100 FPM	



[LEARN MORE](#)

GPS iDETECT-P™ PLENUM-MOUNTED ION DETECTOR

The GPS-iDETECT-P is a plenum-mounted ionization detector that can confirm the output from the GPS-iMOD® System. The GPS-iDETECT-P provides the ability to monitor ionization status in a plenum to confirm that the ionization equipment installed is working properly. The sensor is designed for duct mounting.

BENEFITS:

- Auto-Calibration
- Positive and Negative Ion Sensing
- 10-Inch Sensing Probe
- Universal Voltage Input
- NO and NC “Dry” Contacts

SPECIFICATIONS:

Input Voltage:	18 VAC to 260 VAC
Amps:	5 VA
Power Consumption:	5 watts Detecting, 2 watts Not Detecting
Unit Dimensions:	1.0"Dia. x 10"L
Unit Weight:	0.18 lbs
Alarm Contact Rating:	220VAC/0.5A, NO and NC “dry” contact
Ion Sensing Range:	1,000 to 200 million ions/cc (+/-)
Humidity Range:	0–100% RH
Enclosure:	UL94VO ABS with removable, threaded cable gland
Compliance:	OSHPD Seismic (OSP), IAQP
Local LED Indication:	Power On “Green”, Ion Output “Blue” > Internal Setpoint



[LEARN MORE](#)



WALL-MOUNTED ION METER

GPS-iMEASURE

The GPS iMEASURE is the first commercially available ion detector that can be permanently mounted in the space to measure ion levels in real time and report back to a BMS.

BENEFITS:

- Auto Calibration
- Auto Zero
- 0–10 VDC Output for BAS Monitoring 24/7
- Watchdog Timer
- Bi-Color LED
- 0–1,000,000 ions/cc Range

SPECIFICATIONS:

Input Voltage:	12–24 VDC
Amps:	100 mA
Power Consumption:	2.4 watts
Unit Dimensions:	2.0"L × 4.25"W × 3.25"H
Unit Weight:	0.49 lbs
Output Voltage:	0–10 VDC
Ion Sensing Range:	0–1,000,000 ions (+/-)
Output Impedance:	1,000 ohms
BAS Scaling:	Adjustable
Humidity Range:	0–90% RH non-condensing
Internal Jumper:	Adjusted in field to desired ion range
Compliance:	OSHPD Seismic (OSP)



[LEARN MORE](#)



NEMA 4X CONTROL PANEL

GPS-NEMA4-OE

The GPS-NEMA4-OE is a NEMA 4x-rated fiberglass enclosure designed to house one GPS-iMOD™ power supply. The panel adds a superior finished look to any project while providing the required protection against foreign substances, such as water and dust, when power supplies are mounted in non-NEMA 1 rated environment.

BENEFITS:

- Illuminated On/Off Switch
- Power On
- System Off
- Plasma on LED Indicators

SPECIFICATIONS:

Input Voltage:	(AC Only*) 24V/120V/208–240V
GPS-iMOD	Amps: 0.63A @ 24V, 0.13A @ 120V, 0.07A @ 208–240V
Power Consumption:	15 watts for GPS-iMOD
Frequency:	50/60 Hz
Output Voltage:	5.0 kV RMS for GPS-iMOD
Output Current:	3 mA for GPS-iMOD
Power Entry:	1/4" Heyco Liquid-Tight Connector
Compliance & Certifications:	OSHPD Seismic (OSP)
Unit Weight:	13.99 lbs. with power supply/9.36 lbs. without power supply



[LEARN MORE](#)



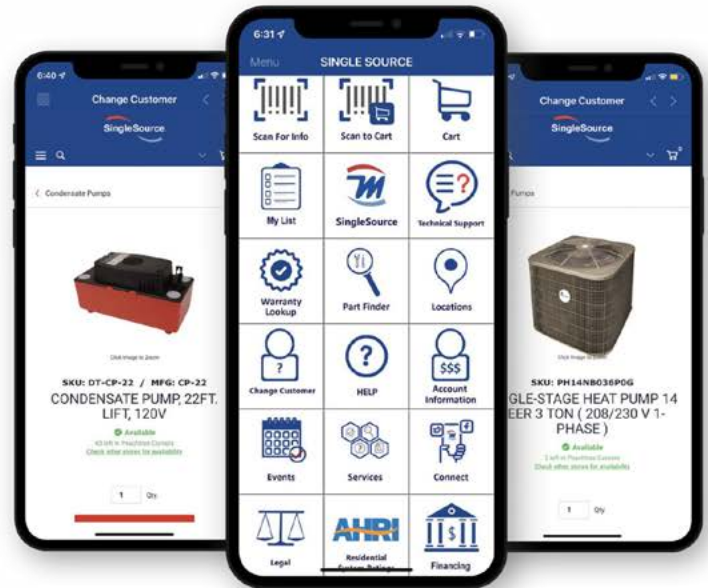
Order Online

PreSeason wishlist available on SingleSource™

- 24/7 access to product information
- Real-time inventory and pricing
- Place orders anytime, anywhere

Get started in 3 simple steps!

1. Download our new App
2. Login to your SingleSource™ account or request an account from home screen
3. Start placing orders online



DOWNLOAD THE APP



What can SingleSource™ do for you?

24/7 ACCESS

- Place orders anytime, anywhere
- Check local inventory and pricing without making a phone call
- Never wait on hold

PRODUCT DATA

- Fast and easy product look-up
- Access product manuals, replacement part lists, and technical specifications
- Search all parts, supplies and equipment with ease

JOB COSTING

- Attach purchase order numbers to web orders and keep your jobs organized under your account
- Create new wishlists for items you order all the time
- Upload your orders as spreadsheets
- Search order history fast and easy

MOBILE ACCESS

- Built for desktop, mobile and tablet compatibility
- Optimized for any device to drive your business on the go
- Search local inventory based on your geolocation

RELIABILITY & CONTROL

- Tested to enhance your business work-flow
- Create admin accounts for your employees based on their role and control their individual access

LOGISTICS

- Know what you're getting, where it's coming from, and when you'll get it
- See product availability at all Mingledorff's locations
- Avoid shipping fees with in-store pickup options or request delivery during checkout



Equipping HVAC Professionals to Succeed

Alabama

Anniston	105 E. D Street Anniston	(256) 241-3026
Auburn/Opelika	2295 1 ST Ave Opelika	(334) 734-8011
Birmingham	516 31 ST St N Birmingham	(205) 250-7714
Dothan	205 Wedgewood Dr. Dothan	(334) 836-1035
Gulf Shores	820 Commerce Dr. Gulf Shores	(251) 968-2660
Huntsville	391 Nick Fitchard Rd. NW Huntsville	(256) 859-2691
Loxley	30020 County Rd. 49 Loxley	(251) 964-2707
Mobile	5522 Commerce Blvd West Mobile	(251) 476-6285
Montgomery	861 Plantation Way Montgomery	(334) 262-4855
Muscle Shoals	107 Commerce St. Muscle Shoals	(256) 383-6904
Tuscaloosa	5030 Old Montgomery Hwy Tuscaloosa	(205) 632-7176

Florida

Fort Walton	76 Beal Pkwy. SW Ft. Walton Beach	(850) 244-2017
Panama City	3012 Lisenby Ave Panama City	(850) 913-0585
Pensacola	4405 N Palafox St. Pensacola	(850) 438-1005

Georgia

Albany	205 Baldwin Dr. Albany	(229) 432-5254
Augusta	3618 Wrightsboro Rd Augusta	(706) 651-1950
Athens/Bogart	105 Whitetail Way Bogart	(706) 548-4019
Atlanta	1290 Tacoma Dr. Atlanta	(404) 875-7755
Brunswick	275 Rose Dr. Brunswick	(912) 265-5193
Braselton (MEC)	5456 Dalton Ct. Braselton	(770) 967-3263
Columbus	6201 W Hamilton Park Dr. Columbus	(706) 322-3870
Conyers	335 Gee's Mill Business Pkwy Conyers	(770) 918-9132
Cumming (MEC)	2570 Business Dr. Cumming	(770) 781-5533
Forest Park	5158 Kennedy Rd. Suite C Forest Park	(404) 361-2474
Gainesville	2472 Hilton Dr. Gainesville	(770) 297-9335
Lawrenceville	2111 Cedars Rd. Bldg A Lawrenceville	(678) 442-1060
Lawrenceville (MEC)	111 Tanner St. Lawrenceville	(770) 963-6226
Lithia Springs	320 Thornton Rd. #106 Lithia Springs	(770) 948-3451
Macon	5527 Thomaston Rd. Macon	(478) 474-8544
Marietta	1060 Triad Ct. Marietta	(770) 426-0551
Marietta (MEC)	1050 Industrial Park Dr. Marietta	(770) 354-1174
Newnan	70 Enterprise Ct. Newnan	(770) 239-2105
Peachtree Corners	6675 Jones Mill Court Peachtree Corners	(770) 239-2100
Savannah	103 Central Jct. Blvd. Savannah	(912) 232-1228
Statesboro	126-A West Parrish St. Statesboro	(912) 764-8841
Valdosta	363 Connell Rd. Valdosta	(229) 245-8200
Warner Robins	110 Byrd Way Warner Robins	(478) 953-3727

Mississippi

Hattiesburg	1851 Lincoln Rd Hattiesburg	(601) 579-9670
Ocean Springs	5717 Suntec Dr, Sunplex Ind Park Ocean Springs	(228) 497-5090

South Carolina

Hardeeville	132 Red Oaks Lane Ridgeland	(843) 867-2143
Hilton Head	21 Hunter Rd. #3715 Hilton Head	(843) 689-3404