



INDOOR AIR QUALITY

PRODUCT GUIDE

www.mingledorffs.com



All information provided in this catalog is for informational purposes only and is subject to change without notice. While we strive for accuracy, we do not guarantee the completeness, reliability, or currentness of the content. Product dimensions and technical data should be verified with the manufacturer or sales team prior to ordering.

TABLE OF CONTENTS

Standard Commercial.....	3-8
HE Series.....	3-8
Standard Residential.....	9-21
EV Series.....	9-12
EV Premium.....	13-21
Multi Family.....	22 -23
Store Locations.....	25

All information provided in this catalog is for informational purposes only and is subject to change without notice. While we strive for accuracy, we do not guarantee the completeness, reliability, or currentness of the content. Product dimensions and technical data should be verified with the manufacturer or sales team prior to ordering.



STANDARD COMMERCIAL

[Click for more info on Commercial](#)

THE RENEWAIRE HE SERIES

[Click for more info on HE Series](#)

HIGH-EFFICIENCY COMMERCIAL ERVS

ADVANCED ENERGY RECOVERY FOR SUPERIOR INDOOR AIR QUALITY

The RenewAire HE Series offers industry-leading commercial energy recovery ventilators (ERVs) designed to maximize energy efficiency while maintaining optimal indoor air quality (IAQ). With a versatile airflow range of 120–8,800 CFM, the HE Series provides a flexible ventilation platform for diverse commercial applications, including K-12 schools, offices, hotels, animal care facilities, factories, and retail.

SUSTAINABLE PERFORMANCE WITH EC MOTOR TECHNOLOGY

To deliver maximum operational savings, the HE Series utilizes advanced motor technology tailored to unit size. The HE05, HE07, HE10, HE15, and HE20 models feature high-performance EC motorized impellers. These direct-drive motors provide precision airflow control, quiet operation, and significantly lower energy consumption, making them the ideal choice for modern, high-efficiency building designs.

ENGINEERED FOR RELIABILITY AND EASE OF INSTALLATION

Every HE Series ERV is built with standard features designed for seamless integration into existing HVAC systems:

- **Integrated Controls:** Includes a 24VAC transformer/relay package and a non-fused disconnect
- **Pressure Monitoring:** Built-in cross-core differential pressure ports allow for easy testing and balancing
- **Robust Motors:** While our smaller and mid-range units (HE05–HE20) utilize EC technology, the HE3X, HE4X, HE6X, and HE8X models come standard with durable TEFC motors

CLEAN AIR, ZERO COMPROMISE

At the heart of the HE Series are our static plate enthalpy cores. These cellulosic-based cores (L62-G5 to L125-G5) are engineered for high-efficiency heat and moisture transfer. They are manufactured without the use of halogenated flame retardants or PVCs, ensuring clean air transfer and compliance with strict environmental standards.

CUSTOMIZABLE VENTILATION OPTIONS

Tailor your ERV system to your specific building requirements with a wide array of factory-installed options and accessories:

- **Bypass Economizers:** Ideal for “free cooling” during shoulder seasons
- **Integrated Programmable Controls:** For smart building management and enhanced monitoring
- **Class 1 Low-Leakage Motorized Isolation Dampers:** Prevents unwanted air infiltration
- **Enhanced Filtration:** High-efficiency MERV 13 filters to capture fine particulates and improve occupant health

STANDARD COMMERCIAL

[Click for more info on Commercial](#)

THE RENEWAIRE HE SERIES

[Click for more info on HE Series](#)

HIGH-EFFICIENCY COMMERCIAL ERVS

HE05 | ERV

The award-winning RenewAire HE05 is a compact, low-profile, energy-efficient commercial ERV (120–375 CFM) that provides superior indoor air quality (IAQ) for light commercial and multi-family applications. Recently named 2025 New Product of the Year for Energy Efficiency by Environmental Protection, its low 12-inch cabinet height and exceptional reliability make it the premier choice for retail stores, salons, and space-constrained multi-family buildings.

Core Technology

- Features one L62-G5 cellulosic static plate core for effective energy and humidity transfer
- Core material is free of halogenated flame retardants and PVCs

Standard Features

- High-efficiency EC motorized impellers
- Independent blower control and swappable airflow configurations (OA/SA and RA/EA)
- 24VAC transformer/relay package and cross-core differential pressure ports

Available Options & Accessories

- Motorized dampers and advanced BACnet fan control
- High-efficiency MERV 13 filters



Application Type	Ventilation Type	Typical Airflow Range	AHRI 1060 Certified Core	Standard OA Filter(s)	Standard RA Filter(s)	Dimensions	Weight
Indoor	Static plate, heat and humidity transfer	120-375 CFM	One L62-G5	Total Qty. 1, MERV 10: 10" x 20" x 2"	Total Qty. 1, MERV 10: 10" x 20" x 2"	34 5/8" L x 37 5/8" W x 12 1/8" H	94 lbs.

[LEARN MORE](#)

STANDARD COMMERCIAL

[Click for more info on Commercial](#)

THE RENEWAIRE HE SERIES

[Click for more info on HE Series](#)

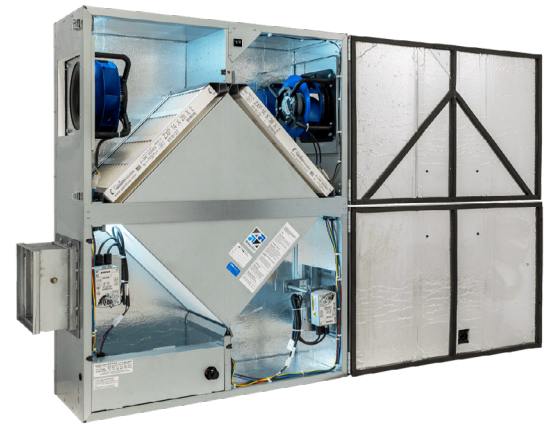
HIGH-EFFICIENCY COMMERCIAL ERVS

HE07IN | INDOOR ERV

The RenewAire HE07IN energy recovery ventilator (ERV) delivers clean, tempered outdoor air to commercial spaces. This unit provides 166–694 CFM airflow. It uses a static-plate enthalpy core to exchange heat and moisture between airstreams. This process improves indoor air quality (IAQ) and lowers utility costs year-round.

Key Product Features

- **Advanced Core Tech:** The HE07IN features one L85-G5 core. This cellulosic-based core provides superior heat and moisture transfer
- **Safe Materials:** The core contains no PVCs. It does not use halogenated flame retardants
- **Standard EC Motors:** Every unit includes high-efficiency EC motorized impellers
- **Dial-A-Flow:** Use the onboard controller to balance airflow and meet CFM targets quickly
- **Durable Cabinet:** The 20-gauge galvanized steel cabinet ensures long-term reliability
- **Certified Quality:** This model is AHRI 1060 Certified and ETL Listed



Application Type	Ventilation Type	Typical Airflow Range	AHRI 1060 Certified Core	Standard OA Filter(s)	Standard RA Filter(s)	Dimensions	Weight
Indoor	Static plate, heat and humidity transfer	166-694 CFM	One L85-G5	Total Qty. 1, MERV 8: 14" x 20" x 2"	Total Qty. 1, MERV 8: 14" x 20" x 2"	40 1/4" L x 17 1/2" W x 50 1/4" H	148-278 lbs. (varies by options)

[LEARN MORE](#)

STANDARD COMMERCIAL

[Click for more info on Commercial](#)

THE RENEWAIRE HE SERIES

[Click for more info on HE Series](#)

HIGH-EFFICIENCY COMMERCIAL ERVS

HE07RT | ROOFTOP ERV

With a CFM range of 166–694, the HE07RT energy recovery ventilator (ERV) can energy-efficiently ventilate commercial spaces. The flexibility, reliability and efficiency of the HE07RT allow it to excel in a wide range of commercial applications including schools, clinics, and retail spaces.

The HE07RT features one L85-G5 core, which is cellulosic-based and doesn't contain or use halogenated flame retardants or PVCs. Standard features include EC motorized impellers, 24VAC transformer/relay package, cross-core differential pressure ports and independent blower control.

The unit is highly configurable. Available options and accessories include the HE+DX Integrated Coil System, advanced EC motorized impellers, isolation dampers, integrated programmable controls, bypass economizer, MERV 13 filters and more.



Key Product Features

- **Advanced Core Tech:** The HE07IN features one L85-G5 core. This cellulosic-based core provides superior heat and moisture transfer
- **Safe Materials:** The core contains no PVCs. It does not use halogenated flame retardants
- **Standard EC Motors:** Every unit includes high-efficiency EC motorized impellers
- **Dial-A-Flow:** Use the onboard controller to balance airflow and meet CFM targets quickly

Application Type	Ventilation Type	Typical Airflow Range	AHRI 1060 Certified Core	Standard OA Filter(s)	Standard RA Filter(s)	Dimensions	Weight
Rooftop	Static plate, heat and humidity transfer	166-694 CFM	One L85-G5	Total Qty. 1, MERV 8: 14" x 20" x 2"	Total Qty. 1, MERV 8: 14" x 20" x 2"	60" L x 30" W x 82 1/4" H	218-373 lbs. (varies by options)

[LEARN MORE](#)

STANDARD COMMERCIAL

[Click for more info on Commercial](#)

THE RENEWAIRE HE SERIES

[Click for more info on HE Series](#)

HIGH-EFFICIENCY COMMERCIAL ERVS

HE10IN | INDOOR ERV

The RenewAire HE10IN energy recovery ventilator (ERV) offers a commercial indoor air quality (IAQ) solution and provides 250–1,100 CFM. The flexibility, reliability and efficiency of the HE10IN allow it to excel in a wide range of commercial applications, including schools, salons, banks, dental offices, and multi-family buildings.

The HE10IN features one L125-G5 core, which is cellulosic-based and doesn't contain or use halogenated flame retardants or PVCs. Standard features include EC motorized impellers, 24VAC transformer/relay package, cross-core differential pressure ports and independent blower control.

The unit is highly configurable. Available options and accessories include the HE+DX Integrated Coil System, advanced EC motorized impellers, isolation dampers, integrated programmable controls, bypass economizer, MERV 13 filters and more.



Application Type	Ventilation Type	Typical Airflow Range	AHRI 1060 Certified Core	Standard OA Filter(s)	Standard RA Filter(s)	Dimensions	Weight
Indoor	Static plate, heat and humidity transfer	250-1100 CFM	One L125-G5	Total Qty. 1, MERV 8: 20" x 20" x 2"	Total Qty. 1, MERV 8: 20" x 20" x 2"	81 7/8" L x 23 3/4" W x 58 1/4" H	261-415 lbs. (varies by options)

[LEARN MORE](#)

STANDARD COMMERCIAL

[Click for more info on Commercial](#)

THE RENEWAIRE HE SERIES

[Click for more info on HE Series](#)

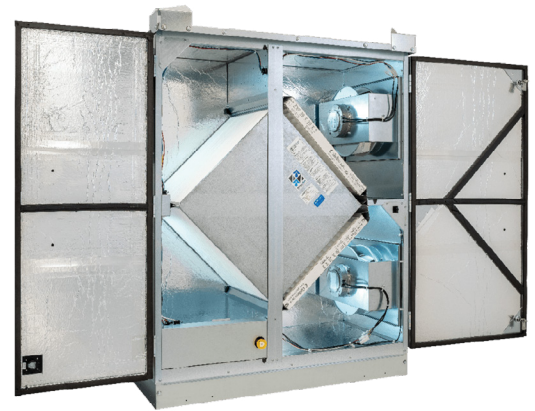
HIGH-EFFICIENCY COMMERCIAL ERVS

HE10RT | ROOFTOP ERV

The RenewAire HE10RT energy recovery ventilator (ERV) offers a commercial indoor air quality (IAQ) solution and provides 250–1,100 CFM. The flexibility, reliability and efficiency of the HE10RT allow it to excel in a wide range of commercial applications including schools, salons, banks, dental offices, and multi-family buildings.

The HE10RT features one L85-G5 core, which is cellulosic-based and doesn't contain or use halogenated flame retardants or PVCs. Standard features include EC motorized impellers, 24VAC transformer/relay package, cross-core differential pressure ports and independent blower control.

The unit is highly configurable. Available options and accessories include the HE+DX Integrated Coil System, advanced EC motorized impellers, isolation dampers, integrated programmable controls, bypass economizer, MERV 13 filters and more.



Application Type	Ventilation Type	Typical Airflow Range	AHRI 1060 Certified Core	Standard OA Filter(s)	Standard RA Filter(s)	Dimensions	Weight
Rooftop	Static plate, heat and humidity transfer	250-1100 CFM	One L125-G5	Total Qty. 1, MERV 8: 20" x 20" x 2"	Total Qty. 1, MERV 8: 20" x 20" x 2"	81 7/8" L x 23 3/4" W x 58 1/4" H	261-415 lbs. (varies by options)

[LEARN MORE](#)

STANDARD RESIDENTIAL

[Click for more info on Residential](#)

THE RENEWAIRE EV SERIES STANDARD RESIDENTIAL ERVS

[Click for more info on EV Series](#)

RenewAire's EV Series energy recovery ventilators (ERVs) are designed for residential applications and have a range of 40–200 CFM. Although the EV Series ERVs are typically installed in single-family homes or multi-family applications, these ERVs also carry a consumer-grade appliance rating, meaning that they could be installed in smaller commercial settings like factory offices and conference/break rooms.

Standard features for the EV Series ERVs include a line cord power supply, a low-voltage circuit for controls, and a white painted cabinet. Additionally, these may be mounted in any orientation, and they have cross-core differential pressure ports.

Each of the EV Series ERVs uses one L-30-G5 Core. These cores are comprised of cellulosic-based material and do not contain or use halogenated flame retardants or PVCs.

STANDARD RESIDENTIAL

[Click for more info on Residential](#)

THE RENEWAIRE EV SERIES STANDARD RESIDENTIAL ERVS

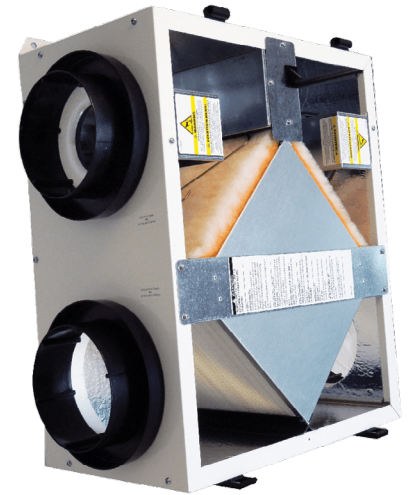
[Click for more info on EV Series](#)

EV90 | INDOOR ERV

The RenewAire EV90 energy recovery ventilator (ERV) delivers fresh, filtered air to residential spaces and light commercial environments. Operating with an airflow range of 40–110 CFM, the EV90 serves single-family homes, factory offices, conference rooms, and break rooms with its consumer-grade appliance versatility.

Key Performance Features

- **Flexible Installation:** Mount the unit in any orientation to fit your specific layout requirements
- **Simple Power & Control:** The unit includes a line-cord power supply and a low-voltage circuit for easy control integration
- **Precision Monitoring:** Cross-core differential pressure ports allow for accurate airflow measurement



Sustainable Core Technology

At the heart of the EV90 sits the L-35-G5 core. Constructed from cellulosic-based material, this core optimizes energy recovery without the use of PVCs or halogenated flame retardants, ensuring a healthier indoor environment.

Application Type	Ventilation Type	Typical Airflow Range	AHRI 1060 Certified Core	Standard OA Filter(s)	Standard RA Filter(s)	Dimensions	Weight
Indoor	Static plate, heat and humidity transfer	40-110 CFM	One L-35-G5	Total Qty: 1, Merv 8: spun polyester media, 9 5/8" x 10 1/2" x 1"	Total Qty: 1, Merv 8: spun polyester media, 9 5/8" x 10 1/2" x 1"	22 1/2" L x 11 5/8" W x 23 3/4" H	36 lbs.

[BUY NOW](#)

STANDARD RESIDENTIAL

[Click for more info on Residential](#)

THE RENEWAIRE EV SERIES STANDARD RESIDENTIAL ERVS

[Click for more info on EV Series](#)

EV130 | INDOOR ERV

The RenewAire EV130 energy recovery ventilator (ERV) delivers high-efficiency ventilation for residential and light commercial spaces. With an airflow range of 50–140 CFM, this versatile unit serves single-family homes and carries a consumer-grade appliance status suitable for schools and beauty salons.



Key Features and Capabilities

- **Flexible Installation:** Mount the unit in any orientation to fit your space requirements
- **Precision Monitoring:** Cross-core differential pressure ports allow for accurate airflow measurement
- **Ready-to-Use Components:** The unit includes a white painted cabinet, a line-cord power supply, and a low-voltage control circuit

Sustainable Core Technology

At the heart of the EV130 sits the L-50-G5 core. Constructed from cellulosic-based material, this core optimizes energy recovery without the use of PVCs or halogenated flame retardants, ensuring a healthier indoor environment.

Application Type	Ventilation Type	Typical Airflow Range	AHRI 1060 Certified Core	Standard OA Filter(s)	Standard RA Filter(s)	Dimensions	Weight
Indoor	Static plate, heat and humidity transfer	50-140 CFM	One L-50-G5	Total Qty: 1, Merv 8: spun polyester media, 10 1/2" x 10 1/2" x 1"	Total Qty: 1, Merv 8: spun polyester media, 10 1/2" x 10 1/2" x 1"	33 1/4" L x 13 1/2" W x 20" H	48 lbs.

[BUY NOW](#)

STANDARD RESIDENTIAL

[Click for more info on Residential](#)

THE RENEWAIRE EV SERIES STANDARD RESIDENTIAL ERVS

[Click for more info on EV Series](#)

EV200 | INDOOR ERV

The RenewAire EV200 energy recovery ventilator provides high-efficiency ventilation for residential and light commercial spaces. This unit delivers a flexible airflow range of 100–200 CFM. While ideal for single-family homes, the EV200 carries consumer-grade appliance status. It serves a wide array of applications, including schools and salons/day spas.

Standard features include a white painted cabinet and a 34-inch line-cord power supply. The unit also features a low-voltage circuit for controls and cross-core differential pressure ports. An onboard 24VAC transformer and relay package come standard to simplify control integration. The EV200 provides exceptional flexibility, as the unit allows for installation in any orientation.



The system utilizes one L-100-G5 static plate core for heat and humidity transfer. This cellulosic-based core contains no PVCs or halogenated flame retardants. Because it requires no condensate drain, the EV200 simplifies installation and reduces long-term maintenance. The unit is HVI Tested and Certified per the CSA C439 protocol to ensure reliable performance data. It also carries a cULus listing for safety compliance.

Standard Features

- Airflow capacity: 100–200 CFM
- Consumer-grade appliance status
- One high-efficiency L-100-G5 static plate core
- Line-cord power supply (34-inch) included
- No condensate drain required
- Two MERV 8 filters included as standard

Application Type	Ventilation Type	Typical Airflow Range	AHRI 1060 Certified Core	Standard OA Filter(s)	Standard RA Filter(s)	Dimensions	Weight
Indoor	Static plate, heat and humidity transfer	100-200 CFM	One L-100-G5	Total Qty: 1, Merv 8: spun polyester media, 10 1/2" x 21 3/4" x 1"	Total Qty: 1, Merv 8: spun polyester media, 10 1/2" x 21 3/4" x 1"	33 1/4" L x 23 7/8" W x 20" H	68 lbs.

[BUY NOW](#)

STANDARD RESIDENTIAL

[Click for more info on Residential](#)

THE RENEWAIRE EV PREMIUM SERIES STANDARD RESIDENTIAL ERVS

[Click for more info on EV Premium Series](#)

Elevate your indoor air quality (IAQ) and achieve maximum energy efficiency with RenewAire's EV Premium Series energy recovery ventilators (ERVs). Spanning a powerful 30–390 CFM range, this versatile line is engineered for both high-performance residential applications and demanding light commercial settings (including clinics, retail stores, salons/spas, offices, and conference rooms).

We are proud to introduce our latest high-performance additions to the line: the EV Premium+ (models include S, SH, M, and MH), expanding the versatility of this award-winning series (including the TecHome Builder's 2023 Brilliance Award recipients).

Every EV Premium ERV features our industry-leading 5th generation (G5) cellulosic core, guaranteeing superior energy transfer and high IAQ without harmful additives like halogenated flame retardants or PVCs. Standard features include high-efficiency EC motorized impellers, flexible any-orientation mounting, boost mode capability, and precise Dial-A-Flow controls, making installation and operation seamless. Customize your unit with available accessories such as high-performance MERV 13 filters, backdraft dampers, and advanced carbon dioxide or motion occupancy sensor/controls.

STANDARD RESIDENTIAL

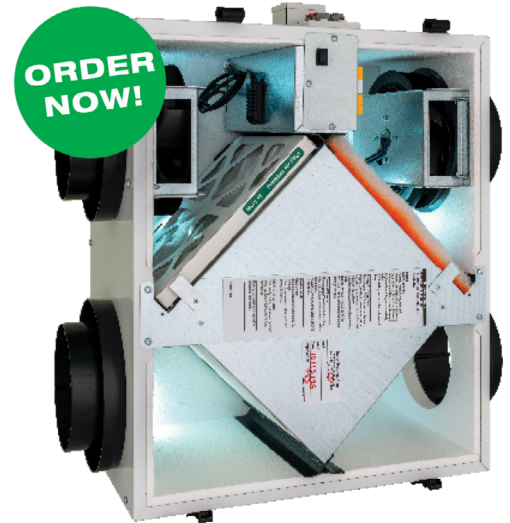
[Click for more info on Residential](#)

THE RENEWAIRE EV PREMIUM SERIES STANDARD RESIDENTIAL ERVS

[Click for more info on EV Premium Series](#)

EV PREMIUM+ M | INDOOR ERV

The RenewAire EV Premium+ M energy recovery ventilator (ERV) provides efficient ventilation for both single-family and multi-family homes. This unit complies with the 2025 California Energy Commission's (CEC) Title 24, Part 6 Fault Indicator Display requirements and delivers an airflow range of 30–230 CFM. In addition to residential use, its light commercial certification allows for easy installation in offices, retail, and apartment complexes.



Performance and Features

The unit streamlines operation with high-efficiency EC motorized impellers and line-cord power. To ensure air quality and precision, the EV Premium+ M offers:

- **Precision Control:** Users can set constant volume airflow and independent low/high/boost-mode speeds
- **Smart Monitoring:** The unit monitors and indicates both filter status and system faults
- **Sustainable Core:** The L-50-G5 core uses cellulosic-based material and contains zero PVCs or halogenated flame retardants

Customizable Accessories

Enhance your system with a variety of optional add-ons, including:

- **Interactive Controls:** Touchscreen Control+ (TC1+), countdown timers (LVCT), or percent timers (LVPT)
- **System Integration:** BACnet fan control for building management
- **Air Quality & Comfort:** MERV 13 filters (for the outdoor airstream) and RH electric duct heaters

Award-Winning Series

In 2023, the EV Premium series won the TecHome Builder's Brilliance Award in the Automated Ventilation Systems category for its innovative design and energy-efficient performance.

Application Type	Ventilation Type	Typical Airflow Range	AHRI 1060 Certified Core	Standard OA Filter(s)	Standard RA Filter(s)	Dimensions	Weight
Indoor	Static plate, heat and humidity transfer	30-230 CFM	One L-50-G5 Core	Total Qty: 1, MERV 8: spun polyester media, 10 1/2" x 10 1/2" x 1"	Total Qty: 1, MERV 8: spun polyester media, 10 1/2" x 10 1/2" x 1"	22 1/2" L x 12 5/8" W x 23 3/4" H	36 lbs.

[LEARN MORE](#)

STANDARD RESIDENTIAL

[Click for more info on Residential](#)

THE RENEWAIRE EV PREMIUM SERIES STANDARD RESIDENTIAL ERVS

[Click for more info on EV Premium Series](#)

EV PREMIUM M | INDOOR ERV

Enhance your indoor air quality with the RenewAire EV Premium M, a versatile energy recovery ventilator (ERV) built for single-family homes, multi-family residences, and light commercial spaces. Delivering an airflow range of 30–225 CFM, this unit efficiently ventilates a wide array of environments, including homes, offices, and salons/day spas.



High-Performance Features

The EV Premium M streamlines operation and installation with a robust set of integrated components:

- **Precision Control:** Use the Dial-A-Flow controller to easily manage variable speeds and activate boost-mode when needed
- **Advanced Efficiency:** EC motorized impellers optimize energy use while providing consistent airflow
- **Line-Cord Power:** Simplify setup with the included line-cord power connection
- **Superior Filtration:** Improve air purity by adding the optional MERV 13 filter to the outdoor airstream

Customizable Accessories

At the heart of the unit, the L-50-G5 core utilizes a specialized cellulosic-based material to transfer heat and moisture. RenewAire prioritizes safety and sustainability by ensuring the core contains no PVCs or halogenated flame retardants.

Award-Winning Series

In 2023, the EV Premium series won the TecHome Builder’s Brilliance Award in the Automated Ventilation Systems category for its innovative design and energy-efficient performance.

Application Type	Ventilation Type	Typical Airflow Range	AHRI 1060 Certified Core	Standard OA Filter(s)	Standard RA Filter(s)	Dimensions	Weight
Indoor	Static plate, heat and humidity transfer	30-225 CFM	One L-50-G5	Total Qty: 1, Merv 8: spun polyester media, 10 1/2" x 10 1/2" x 1"	Total Qty: 1, Merv 8: spun polyester media, 10 1/2" x 10 1/2" x 1"	22 1/2" L x 12 5/8" W x 23 3/4" H	36 lbs.

[LEARN MORE](#)

STANDARD RESIDENTIAL

[Click for more info on Residential](#)

THE RENEWAIRE EV PREMIUM SERIES STANDARD RESIDENTIAL ERVS

[Click for more info on EV Premium Series](#)

EV PREMIUM+ MH | INDOOR ERV

The RenewAire EV Premium+ MH energy recovery ventilator (ERV) is designed for both single and multi-family homes. EV Premium+ MH is compliant with 2025 California Energy Commission's (CEC) Title 24, Part 6 Fault Indicator Display requirements and has an airflow range of 30–230 CFM. In addition to residential applications, the EV Premium+ MH ERV is also certified light commercial and could be installed in factory offices and apartment complexes.

Unit features include hard-wired power, EC motorized impellers, MERV 13 filter on the outdoor airstream (available as an accessory), constant volume airflow setpoints, independent low and high/boost-mode speeds, filter and fault monitoring/indication. The EV Premium+ MH also has one L-50-G5 core. The core, which is comprised of cellulosic-based material and doesn't contain/use halogenated flame retardants or PVCs.

Available options and accessories include the user-friendly and interactive 4-inch Touchscreen Control+ (TC1+), countdown timer (LVCT), percent timer (LVPT), BACnet Fan Control, RH Electric Duct Heater, MERV 13 filters, and more.



Application Type	Ventilation Type	Typical Airflow Range	AHRI 1060 Certified Core	Standard OA Filter(s)	Standard RA Filter(s)	Dimensions	Weight
Indoor	Static plate, heat and humidity transfer	30-230 CFM	One L-50-G5 Core	Total Qty: 1, MERV 8: spun polyester media, 10 1/2" x 10 1/2" x 1"	Total Qty: 1, MERV 8: spun polyester media, 10 1/2" x 10 1/2" x 1"	22 1/2" L x 15 5/8" W x 23 3/4" H	36 lbs.

[LEARN MORE](#)

STANDARD RESIDENTIAL

[Click for more info on Residential](#)

THE RENEWAIRE EV PREMIUM SERIES STANDARD RESIDENTIAL ERVS

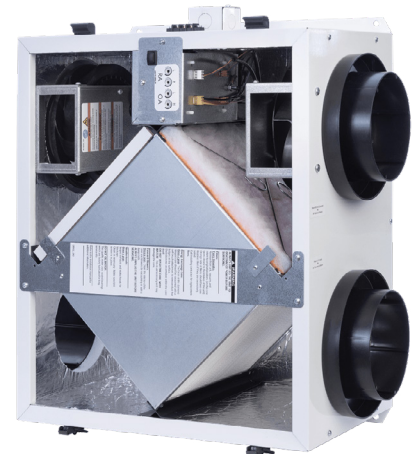
[Click for more info on EV Premium Series](#)

EV PREMIUM MH | INDOOR ERV

The award-winning RenewAire EV Premium MH provides high-performance ventilation for single and multi-family homes. This hard-wired ERV delivers a flexible airflow range of 30–225 CFM. In addition to residential use, the EV Premium MH carries certification for light commercial buildings. The unit fits perfectly in factory offices, conference rooms, salons and day spas.

Standard features include high-efficiency EC motorized impellers and a Dial-A-Flow digital controller. The system also offers a variable speed boost-mode for increased airflow. The EV Premium MH utilizes one L-50-G5 core. This cellulosic-based core contains no PVCs or halogenated flame retardants. Users may also add a MERV 13 filter to the outdoor airstream as an accessory.

In 2023, the EV Premium MH won the TecHome Builder’s Brilliance Award. It earned this honor in the Automated Ventilation System category alongside the SH and LH models.



Application Type	Ventilation Type	Typical Airflow Range	AHRI 1060 Certified Core	Standard OA Filter(s)	Standard RA Filter(s)	Dimensions	Weight
Indoor	Static plate, heat and humidity transfer	30-225 CFM	One L-50-G5	Total Qty: 1, Merv 8: spun polyester media, 10 1/2" x 10 1/2" x 1"	Total Qty: 1, Merv 8: spun polyester media, 10 1/2" x 10 1/2" x 1"	22 1/2" L x 12 5/8" W x 23 3/4" H	36 lbs.

[BUY NOW](#)

STANDARD RESIDENTIAL

[Click for more info on Residential](#)

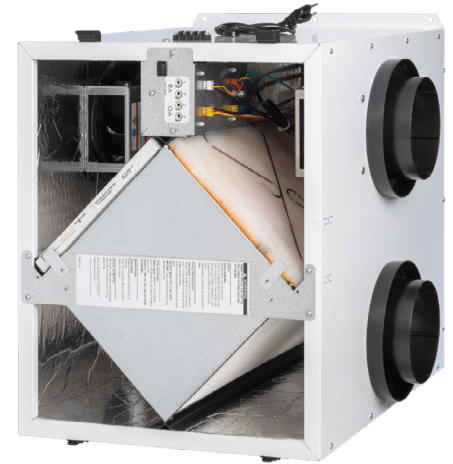
THE RENEWAIRE EV PREMIUM SERIES STANDARD RESIDENTIAL ERVS

[Click for more info on EV Premium Series](#)

EV PREMIUM L | INDOOR ERV

The RenewAire EV Premium L energy recovery ventilator (ERV) is designed for both single and multi-family homes. These ERVs have an airflow range of 30–280 CFM. In addition to residential applications, the EV Premium L is also certified light commercial and could be installed in factory offices, conference and break rooms.

Unit features include line-cord power, EC motorized impellers, MERV 13 filter on the outdoor airstream (available as an accessory), Dial-A-Flow controller, and variable speed with boost-mode. The EV Premium L also has one L-100-G5 core. The core, which is comprised of cellulosic-based material and doesn't contain/use halogenated flame retardants or PVCs.



Application Type	Ventilation Type	Typical Airflow Range	AHRI 1060 Certified Core	Standard OA Filter(s)	Standard RA Filter(s)	Dimensions	Weight
Indoor	Static plate, heat and humidity transfer	30-280 CFM	One L-100-G5	Total Qty: 1, Merv 8: spun polyester media, 10 1/2" x 21 3/4" x 1"	Total Qty: 1, Merv 8: spun polyester media, 10 1/2" x 21 3/4" x 1"	22 1/2" L x 23 5/8" W x 23 3/4" H	52 lbs.

[BUY NOW](#)

STANDARD RESIDENTIAL

[Click for more info on Residential](#)

THE RENEWAIRE EV PREMIUM SERIES STANDARD RESIDENTIAL ERVS

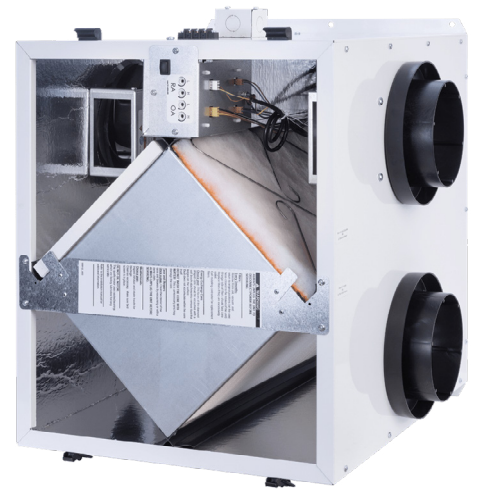
[Click for more info on EV Premium Series](#)

EV PREMIUM LH | INDOOR ERV

The award-winning RenewAire EV Premium LH energy recovery ventilator (ERV) is designed for both single and multi-family homes. These ERVs have an airflow range of 30–280 CFM. In addition to residential applications, the EV Premium LH is also certified light commercial and could be installed in factory offices, conference and break rooms.

Unit features include hard-wired power, EC motorized impellers, MERV 13 filter on the outdoor airstream (available as an accessory), Dial-A-Flow digital controller, and variable speed with boost-mode. The EV Premium LH also has one L-100-G5 core. The core, which is comprised of cellulosic-based material, doesn't contain/use halogenated flame retardants or PVCs.

In 2023, the EV Premium LH along with the EV Premium SH and EV Premium MH was awarded TechHome Builder's Brilliance Award in the Automated Ventilation System (HRV and ERV) category.



Application Type	Ventilation Type	Typical Airflow Range	AHRI 1060 Certified Core	Standard OA Filter(s)	Standard RA Filter(s)	Dimensions	Weight
Indoor	Static plate, heat and humidity transfer	30-280 CFM	One L-100-G5	Total Qty: 1, Merv 8: spun polyester media, 10 1/2" x 21 3/4" x 1"	Total Qty: 1, Merv 8: spun polyester media, 10 1/2" x 21 3/4" x 1"	22 1/2" L x 23 5/8" W x 23 3/4" H	52 lbs.

[BUY NOW](#)

STANDARD RESIDENTIAL

[Click for more info on Residential](#)

THE RENEWAIRE EV PREMIUM SERIES STANDARD RESIDENTIAL ERVS

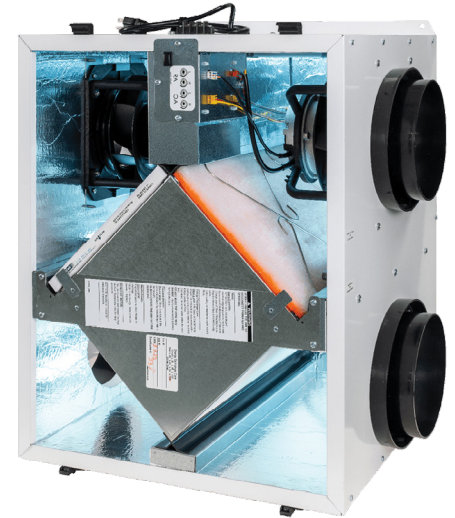
[Click for more info on EV Premium Series](#)

EV PREMIUM X | INDOOR ERV

The RenewAire EV Premium X energy recovery ventilator (ERV) has an airflow range of 100–390 CFM and is designed for both single and multi-family homes. In addition to residential applications, this ERV is certified for light commercial use and can be installed in factory offices, conference rooms, and break rooms.

Unit features include line-cord power, EC motorized impellers, MERV 13 filter on the outdoor airstream (available as an accessory), Dial-A-Flow controller, and variable speed with boost-mode. The EV Premium X utilizes one L-100-G5 static plate core. This cellulosic-based core contains no PVCs or halogenated flame retardants.

Available options and accessories include Push-button boost timer (PBT), Percentage timer control (PTL), BACnet Fan Control, Electric duct heater: RH series, and MERV 13 filters.



Standard Features

- Airflow capacity: 100–390 CFM
- Line-cord power supply or hard-wired to junction box (H)
- Dial-A-Flow
- Variable speed
- Boost-mode
- 10-year static plate core warranty

Available Accessories

- Backdraft damper: 8"
- Push-button boost timer (PBT)
- Percentage timer control (PTL)
- BACnet Fan Control
- MERV 13 filter: OA airstream
- Electric duct heater: RH series

Application Type	Ventilation Type	Typical Airflow Range	AHRI 1060 Certified Core	Standard OA Filter(s)	Standard RA Filter(s)	Dimensions	Weight
Indoor	Static plate, heat and humidity transfer	100-390 CFM	One L-100-G5	Total Qty: 1, Merv 8: spun polyester media, 10 1/2" x 21 3/4" x 1"	Total Qty: 1, Merv 8: spun polyester media, 10 1/2" x 21 3/4" x 1"	24 3/8" L X 23 5/8" W X 27 1/4" H	65 lbs.

[BUY NOW](#)

STANDARD RESIDENTIAL

[Click for more info on Residential](#)

THE RENEWAIRE EV PREMIUM SERIES STANDARD RESIDENTIAL ERVS

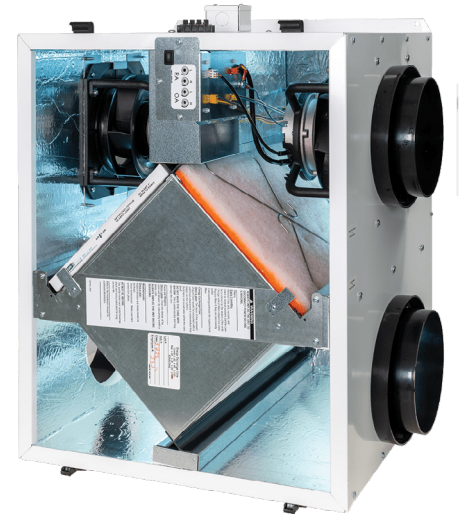
[Click for more info on EV Premium Series](#)

EV PREMIUM XH | INDOOR ERV

The RenewAire EV Premium XH energy recovery ventilator (ERV) has an airflow range of 100–390 CFM and is designed for both single and multi-family homes. In addition to residential applications, the EV Premium XH is certified for light commercial use and can be installed in factory offices, conference, and break rooms.

Unit features include hard-wired power, EC motorized impellers, MERV 13 filter on the outdoor airstream (available as an accessory), Dial-A-Flow controller, and variable speed with boost-mode. The EV Premium XH also has one L-100-G5 core. The core comprises cellulosic-based material and doesn't contain/use halogenated flame retardants or PVCs.

Available options and accessories include Push-button boost timer (PBT), Percentage timer control (PTL), BACnet fan control, Electric duct heater: RH series, and MERV 13 filter.



Standard Features

- Airflow capacity: 100–390 CFM
- Line-cord power supply or hard-wired to junction box
- Dial-A-Flow
- Variable speed
- Boost-mode
- 10-year static plate core warranty

Available Accessories

- Motorized damper: 8"
- Push-button boost timer (PBT)
- Percentage timer control (PTL)
- Push-button point-of-use controls (PBL)
- BACnet Fan Control
- Electric duct heater: RH series

Application Type	Ventilation Type	Typical Airflow Range	AHRI 1060 Certified Core	Standard OA Filter(s)	Standard RA Filter(s)	Dimensions	Weight
Indoor	Static plate, heat and humidity transfer	100-390 CFM	One L-100-G5	Total Qty: 1, Merv 8: spun polyester media, 10 1/2" x 21 3/4" x 1"	Total Qty: 1, Merv 8: spun polyester media, 10 1/2" x 21 3/4" x 1"	24 3/8" L X 23 5/8" W X 27 1/4" H	65 lbs.

BUY NOW

MULTI FAMILY

[Click for more info on SL Series](#)

SL75 | INDOOR ERV

The RenewAire SL75 provides a low-profile, compact solution for high-efficiency ventilation. This energy recovery ventilator (ERV) serves multi-family homes and compartmentalized commercial spaces with a CFM range of 30–130. The slim design excels in areas with minimal bulkhead or ceiling space, such as installations between trusses. Beyond residential use, the SL75 carries light commercial certification to meet diverse building codes for both light and heavy commercial applications.

Standard features include a 34-inch line-cord power supply and high-efficiency EC motorized impellers. The unit also features a Dial-A-Flow digital controller and a variable speed boost-mode. The SL75 utilizes independent fans, allowing contractors to set airflows independently for perfectly balanced ventilation. This system utilizes one L-30-G5 static plate core for total energy recovery. This cellulosic-based core contains no PVCs or halogenated flame retardants. Because it requires no condensate drain, the unit simplifies installation in tight mechanical spaces. The SL75 is HVI Tested and Certified and carries a cULus listing for safety.



Standard Features

- Airflow capacity: 30–130 CFM
- 6-inch and 8-inch duct connections
- Compact, low-profile design for truss installation
- Independent fan control for perfect balancing
- No condensate drain line required
- 10-year static plate core warranty

Available Accessories

- Backdraft dampers
- CO2 and indoor air quality sensors
- Push-button boost timers (PBT)
- MERV 13 filters for the outdoor airstream

Application Type	Ventilation Type	Typical Airflow Range	AHRI 1060 Certified Core	Standard OA Filter(s)	Standard RA Filter(s)	Dimensions	Weight
Indoor	Static plate, heat and humidity transfer	30-130 CFM	One L-30-G5 Core	Total Qty: 1, Merv 8: spun polyester media, 7 1/2" x 10 1/2" x 1"	Total Qty: 1, Merv 8: spun polyester media, 7 1/2" x 10 1/2" x 1"	30 3/4" L x 20 3/8" W x 9 1/2" H	35 lbs.

[LEARN MORE](#)

MULTI FAMILY

[Click for more info on SL Series](#)

SL75H | INDOOR ERV

The RenewAire SL75H is a hard-wired, low-profile energy recovery ventilator (ERV). This compact unit serves multi-family homes with a CFM range of 30–130. It also carries light commercial certification for professional use. The SL75H fits perfectly in commercial spaces with minimal ceiling clearance and Passive House projects.

Standard features include EC motorized impellers and a Dial-A-Flow controller. The unit also offers a variable speed boost-mode. The SL75H utilizes one L-30-G5 core. This cellulosic-based core contains no PVCs or halogenated flame retardants.

Enhanced Indoor Air Quality

Clean air remains essential for healthy living environments. The SL75H helps optimize indoor air quality by removing stale air and pollutants from the building. The unit replaces trapped indoor air with fresh, filtered outdoor air. This process reduces allergens and odors while maintaining high energy efficiency.



Application Type	Ventilation Type	Typical Airflow Range	AHRI 1060 Certified Core	Standard OA Filter(s)	Standard RA Filter(s)	Dimensions	Weight
Indoor	Static plate, heat and humidity transfer	30-130 CFM	One L-30-G5 Core	Total Qty: 1, Merv 8: spun polyester media, 7 1/2" x 10 1/2" x 1"	Total Qty: 1, Merv 8: spun polyester media, 7 1/2" x 10 1/2" x 1"	30 3/4" L x 20 3/8" W x 9 1/2" H	35 lbs.

[LEARN MORE](#)



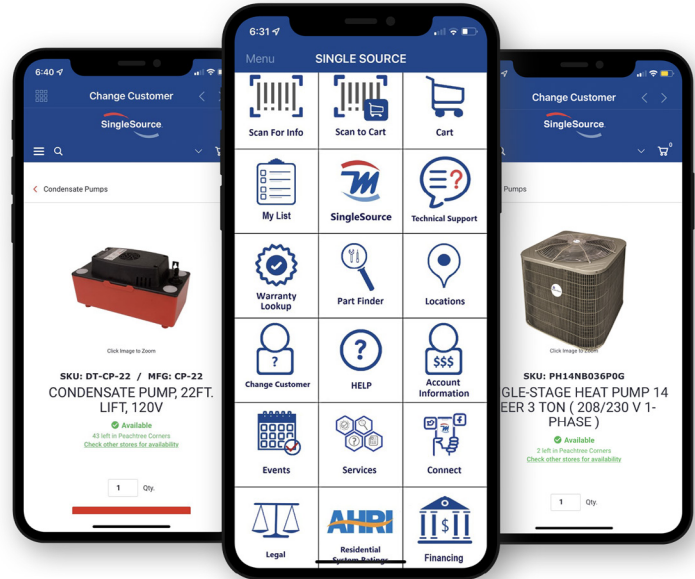
Order Online

PreSeason wishlist available on SingleSource®

- 24/7 access to product information
- Real-time inventory and pricing
- Place orders anytime, anywhere

Get started in 3 simple steps!

1. Download our new App
2. Login to your SingleSource® account or request an account from home screen
3. Start placing orders online



DOWNLOAD THE APP



What can SingleSource® do for you?

24/7 ACCESS

- Place orders anytime, anywhere
- Check local inventory and pricing without making a phone call
- Never wait on hold

PRODUCT DATA

- Fast and easy product look-up
- Access product manuals, replacement part lists, and technical specifications
- Search all parts, supplies and equipment with ease

JOB COSTING

- Attach purchase order numbers to web orders and keep your jobs organized under your account
- Create new wishlists for items you order all the time
- Upload your orders as spreadsheets
- Search order history fast and easy

MOBILE ACCESS

- Built for desktop, mobile and tablet compatibility
- Optimized for any device to drive your business on the go
- Search local inventory based on your geolocation

RELIABILITY & CONTROL

- Tested to enhance your business work-flow
- Create admin accounts for your employees based on their role and control their individual access

LOGISTICS

- Know what you're getting, where it's coming from, and when you'll get it
- See product availability at all Mingledorff's locations
- Avoid shipping fees with in-store pickup options or request delivery during checkout

41 LOCATIONS THROUGHOUT THE SOUTHEAST TO SERVE YOU

Pricing, availability and product information available 24/7 at singlesource.mingledorffs.com.

Location	Phone	Address
Albany	(229) 432-5254	408 South Westover Blvd. Albany, GA 31707
Anniston	(256) 241-3026	105 E. D St. Anniston, AL 36201
Athens	(706) 548-4019	105 Whitetail Way Bogart, GA 30622
Atlanta	(404) 875-7755	1290 Tacoma Dr. Atlanta, GA 30318
Auburn	(334) 734-8011	2295 1st Ave. Opelika, AL 36801
Augusta	(706) 651-1950	3618 Wrightsboro Rd. Augusta, GA 30909
Birmingham	(205) 250-7714	516A 31st St. N Birmingham, AL 35203
Braselton – MEC	(770) 967-3263	5456 Dalton Ct. Braselton, GA 30517
Brunswick	(912) 265-5193	275 Rose Dr. Brunswick, GA 31520
Columbus	(706) 322-3870	6201 West Hamilton Park Dr. Columbus, GA 31909
Conyers	(770) 918-9132	335 Gee's Mill Business Pkwy. Conyers, GA 30013
Cumming – MEC	(770) 781-5533	2570 Business Dr. Cumming, GA 30040
Dothan	(334) 836-1035	110 Commercial Ln. Dothan, AL 36303
Forest Park	(404) 361-2474	5158 Kennedy Rd. Suite B&C Forest Park, GA 30297
Fort Walton	(850) 244-2017	76 Beal Pkwy. SW Ft. Walton Beach, FL 32548
Gainesville	(770) 297-9335	2472 Hilton Dr. Gainesville, GA 30501
Gulf Shores	(251) 968-2660	820 Commerce Dr. Gulf Shores, AL 36542
Hardeeville	(843) 867-2143	132 Red Oaks Way Ridgeland, SC 29936
Hattiesburg	(601) 579-9670	1851 Lincoln Rd. Hattiesburg, MS 39402
Hilton Head	(843) 689-3404	21-A Hunter Rd. Hilton Head, SC 29926
Huntsville	(256) 859-2691	391 Nick Fitchheard Rd. Huntsville, AL 35806
Lawrenceville	(678) 442-1060	2111 Cedar Rd. Bldg. A Lawrenceville, GA 30043

Location	Phone	Address
Lawrenceville – MEC	(770) 963-6226	111-B Tanner St. Lawrenceville, GA 30046
Lithia Springs	(770) 948-3451	320 Thorton Rd. #106 Lithia Springs, GA 30122
Loxley	(251) 964-2707	30020 County Rd. 49 Loxley, AL 36551
Macon	(478) 474-8544	5527 Thomaston Rd. Macon, GA 31220
Marietta	(770) 426-0551	1060-D Triad Ct. Marietta, GA 30062
Marietta – MEC	(678) 354-1174	1050 Industrial Park Dr. Suite A Marietta, GA 30062
Mobile	(251) 476-6285	5522 W Commerce Blvd. Mobile, AL 36619
Montgomery	(334) 262-4855	861 Plantation Way, Bldg A Montgomery, AL 36117
Muscle Shoals	(256) 383-6904	107 Commerce St. Muscle Shoals, AL 35661
Newnan	(770) 239-2105	70 Enterprise Ct. Newnan, GA 30265
Ocean Springs	(228) 497-5090	5717 Suntech Dr. Sunplex Ind. Park Ocean Springs, MS 39564
Panama City	(850) 913-0585	800 W 13th St. Panama City, FL 32401
Peachtree Corners	(770) 239-2100	6675 Jones Mill Ct. Peachtree Corners, GA 30092
Pensacola	(850) 438-1005	4405 North Palafox St. Pensacola, FL 32505
Savannah	(912) 232-1228	103 Central Junction Blvd. Savannah, GA 31405
Statesboro	(912) 764-8841	251 West Parrish St. Statesboro, GA 30458
Tuscaloosa	(205) 632-7176	5030 Old Montgomery Hwy Tuscaloosa, AL 35405
Valdosta	(229) 245-8200	363 Connell Rd. Valdosta, GA 31602
Warner Robins	(478) 953-3727	110 Byrd Way Warner Robins, GA 31088

©2026 Mingledorff's, LLC All rights reserved. | REV: 04092026

All information provided in this catalog is for informational purposes only and is subject to change without notice. While we strive for accuracy, we do not guarantee the completeness, reliability, or currentness of the content. Product dimensions and technical data should be verified with the manufacturer or sales team prior to ordering.